



At Siddhapura, White Field Road

*High Living  
Now Impressive Than Ever...*



A MEGA VENTURE  
BY  
VISHNU PRIYA GROUP





# Parimala SunRidge

At Siddhapura, White Field Road



## AN ADDRESS FOR THE ACCOMPLISHED!

Experience a superior lifestyle that promises luxurious spaces, recreation, value-added features and total security. Give your family the happiness of lifetime at Vishnu Priya's one-of-a-kind project, Parimala SunRidge.

### PROJECT HIGHLIGHTS

- ▶ Gated Community of Apartments
- ▶ Deluxe quality construction
- ▶ Vastu compliant
- ▶ No common walls
- ▶ Majestic entrance gate
- ▶ Wide driveways
- ▶ 24-hr security with Intercom & CC cameras
- ▶ Clubhouse
- ▶ Jogging track
- ▶ Excellent landscaping
- ▶ Children play area
- ▶ 24-hr water supply
- ▶ Centralized piped gas supply
- ▶ Water treatment plant
- ▶ 6 Passenger lifts, 6 Service lifts
- ▶ Two-level parking
- ▶ Generator backup
- ▶ Water harvesting pits
- ▶ Sewage treatment plant





## ENJOY A PRIVILEGED LIFESTYLE

Rising at Siddhapura, Parimala SunRidge is dream home come true. The 280 apartment project in six majestic towers – Mt Aria, Mt Cera, Mt Lexa, Mt Mira, Mt Nova and Mt Zara present enviable lifestyle. Step into two and three bedroom apartments ranging from 1200 Sft to 1800 Sft areas. Choose from 24 floor designs that suit your taste and budgets.







## A HOME LIKE NO OTHER

### SPECIAL FEATURES

- ▶ Entry Park with Water fountain
- ▶ Entry Lounge for visitors
- ▶ Golf Putting
- ▶ Video - Security in Common Areas
- ▶ Car parking for visitors
- ▶ Large balconies & Spacious kitchens
- ▶ Pergolas
- ▶ Water bodies
- ▶ Skating rink
- ▶ Cricket nets
- ▶ Half-Basketball court
- ▶ Amphi-theater
- ▶ Senior citizens' corners
- ▶ Children play areas
- ▶ Car wash bay
- ▶ Drivers' rest room
- ▶ Generator back up - 1 KV for 2-bedroom & 1.5 KV for 3-bedroom apartments

As you enter the entrance gate, you are transported to a new world. Lush green landscaping brings peace of mind. The apartments' design fosters excellent cross ventilation and natural light. Large balconies connect with beautiful outdoors. Quality construction and brand fittings create a magical ambience in indoors. Living room hosts countless warm moments while study room lets you focus on work. The senior citizens have designated niche areas to have good times.

Parimala SunRidge is a spacious habitat with playful surroundings to delight the kids. Children will have fun at skating rink, cricket nets, basketball court, sparkling blue swimming pool in secure outdoors. Water bodies, tot lots, pergolas and fountains will draw residents outdoors for blissful moments. The premises are flawless with landscaping and well-defined spaces.







At Siddhapura, White Field Road

## CLUBHOUSE

- ▶ Two level Clubhouse
- ▶ Swimming pool with toddlers' pool
- ▶ Indoor squash court
- ▶ Indoor games (Chess, Caroms, Table Tennis)
- ▶ Multi-purpose hall
- ▶ Creche space
- ▶ Yoga & Meditation hall

## RELAX BODY, MIND & SOUL

The two level Clubhouse offers recreation options that impresses kids to senior citizens. The clubhouse features resort-style amenities like modern swimming pool, state-of-the-art fitness center and multi-purpose hall. Start the day with a brisk walk and a workout at state-of-the-art fitness center. Host parties in multi-purpose hall and play a game with neighbors at Indoor games room. You'll never have a dull moment at clubhouse.





# MASTER PLAN



At Siddhapura, White Field Road



- Amphiatre
- Fountain
- Commercial Block

- Toddlers Pool
- Swimming Pool
- Clubhouse

**Mt Aria**

- Half-Basketball Court
- Cricket Net
- Skating Rink

- Jogging Track
- Children Play Area

## NO TWO FLATS ARE SAME!

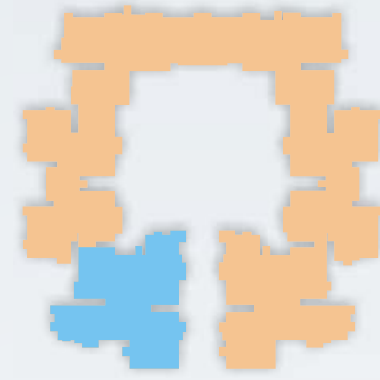
- ▶ 280 two & three bedroom apartments
- ▶ 6 Towers, 12 Floors each
- ▶ 24 types of customized floor plans to choose
- ▶ Vastu compliant
- ▶ 1200 Sft to 1800 Sft areas
- ▶ Two-bedroom apartments - 1200 Sft
- ▶ Two-bedroom with Study - 1250 Sft, 1275 Sft
- ▶ Three-bedroom with Two bathrooms - 1400 Sft
- ▶ Three-bedroom apartments - 1500, 1600, 1700 & 1800 Sft



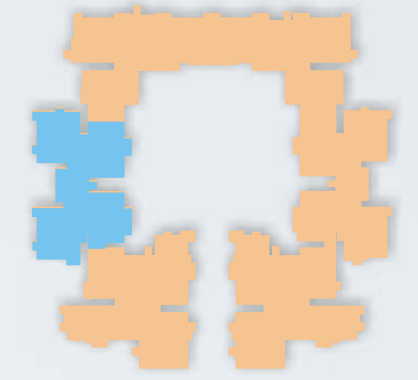




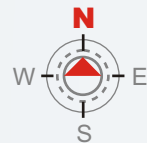
Key Plan



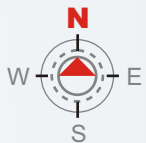
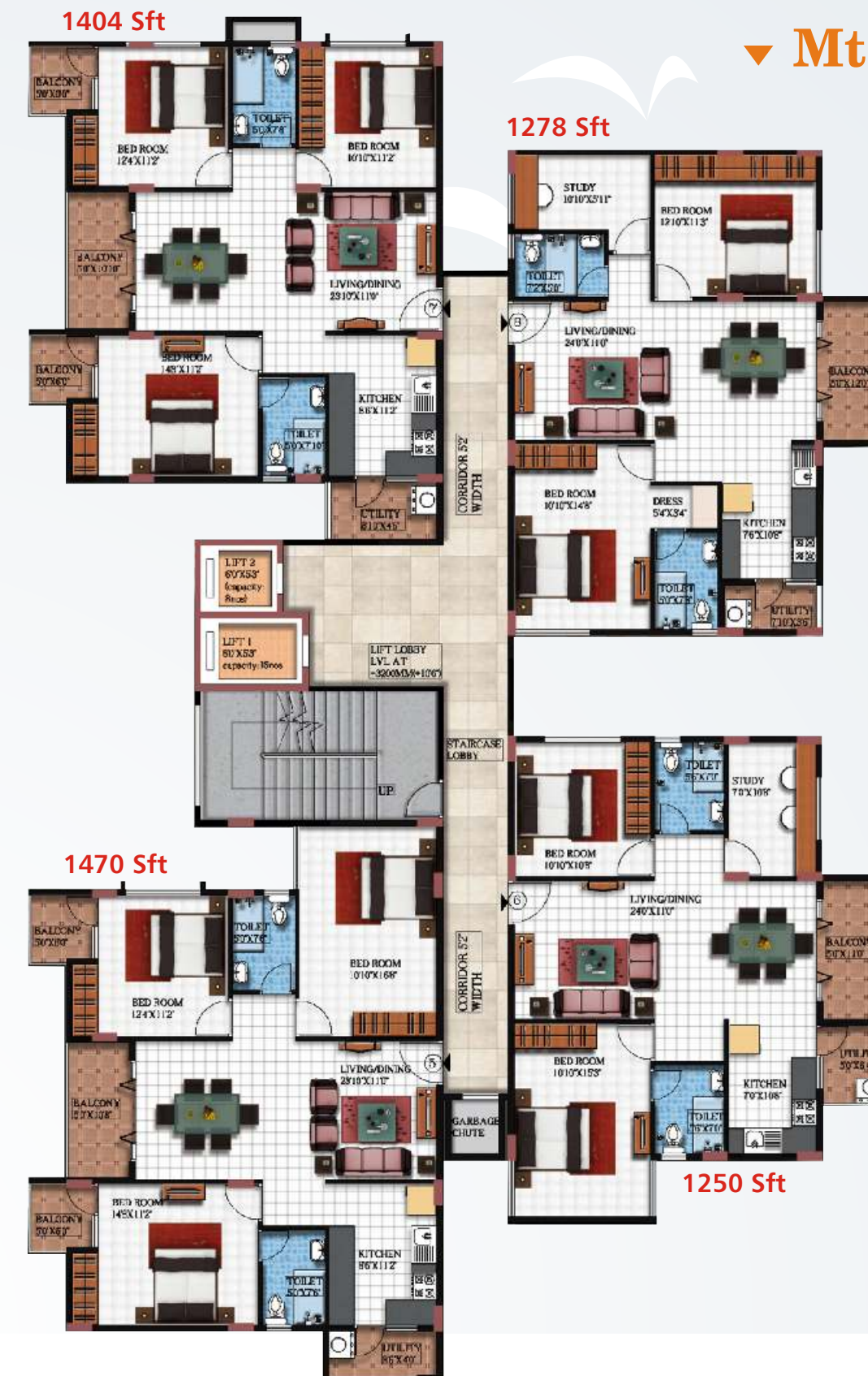
Key Plan



▼ Mt Aria



▼ Mt Cora







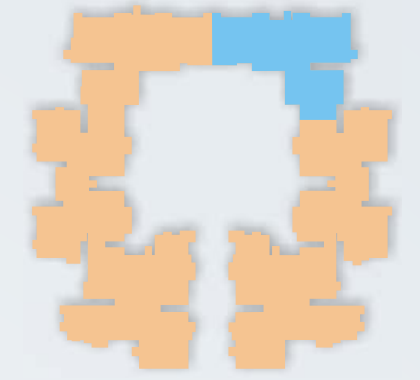
Key Plan



▼ Mt Lexa

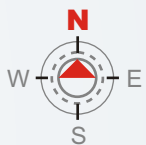
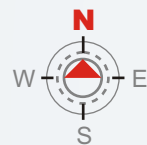


Key Plan



▼ Mt Mira

2 & 3BHK FLOOR PLANS









# SPECIFICATIONS

## Structure

R.C.C framed structure: To withstand Seismic loads.  
Superstructure: Solid Blocks with CM (1:6) ratio.

## Joinery Works

Main door: Teak wood frame & Shutter aesthetically designed with melamine polishing and designer Hardware of Reputed make.

Internal Doors: Teak Veneer flush door with Reputed make hardware fittings.

Toilet Doors: Hard-Core filled water proof flush shutter of reputed make, fitted with reputed make hardware.

## Windows

UPVC: Good quality windows with standard hardware

## Flooring

Bedrooms, Drawing, Living, Dining & Kitchen: Vitrified tiles of size (2X2) for the entire flat.

## Painting

Internal: Smooth finish with birla putty or equivalent, and two coats of Royal emulsion paint or equivalent over a coat of primer.

## Ceiling

Smooth finish with luppum/altek or equivalent and two coats of Royal emulsion paint or equivalent over a coat of primer.

## External

Combination of texture and luppam finish with Apex ultima paint as per architectural design.

## Kitchen

Granite platform with stainless steel sink with both municipal & bore water connection & provision for fixing of Aqua-guard.

Provision for cabinets, exhaust fan & chimney.

## Utilities

Provision for washing machine & wet area for washing utensils etc.

## Toilets

Granite Counter Top wash basin in Master bedroom Toilet.

Pedestal wash basin in the remaining two Toilets.

Wall hung E W C of reputed make.

Hot and cold single lever diverter with shower

Provision for geysers & exhaust fan in all toilets / kitchen.

C.P. Fittings of jaguar or equivalent make

Water Proofing: For all toilets and entire terrace.

## Plumbing

All internal and external waterline of CPVC material.

All drainage Fitting lines are of PVC

## Electrical

Concealed copper wiring in conduits for Lights, fan, plug and power plug where ever necessary, of Hawells / Anchor or Equivalent make.

Power outlets for Air conditioners in all bedrooms.

Power outlets for geysers in all Toilets.

Plug points for refrigerator, T.V. where ever necessary, individual meter boards.

All electrical fittings of Anchor Roma or equivalent make.

## Telecom

Telephone point in Master bedrooms, living & dining areas.

Intercom facility.

## Cable TV

Provision for cable connection in Master Bedrooms & Living room.

## Lifts

8 Passengers lift of reputed make with front granite cladding.

## Power Backup

Acoustically insulated stand by generator for lights in common areas and pumps.

1KVA for 2BHK; 1.5 KVA for 3BHK

## Other Features

The bore wells, Sump and STP

## Land Scaping

Garden, Lawns and water fountain etc.



## LOCATION MAP

(NOT TO SCALE)

## CHERISH AN ADDRESS OF TOMORROW

- ▶ Kundalahalli Junction - 1.5 Kms
- ▶ Sigma Tech Park - 1.5 Kms
- ▶ Forum Valley Mall - 2.5 Kms
- ▶ Hypercity Mall - 2.5 Kms
- ▶ ITPL - 2.5 Kms
- ▶ VIBJYOR School - 2 Kms
- ▶ Ryan International School - 3 Kms
- ▶ Vagdevi School - 3.5 Kms

Abutting Varthur Mainroad, Parimala SunRidge is strategically located close to IT destinations. The mega project fulfills your aspirations at an ideal location at 1.5 Kms from Kundalahalli Junction. Excellent connectivity, proximity to IT offices and Tech Parks, Malls, fine dining and reputed schools make this home desirable. Live amidst like-minded neighbors who are cosmopolitan, young and high-spending.



The Forum Value Mall



Hypercity Mall



Ryan International School



Vibjyor School



Sathya Sai Hospital



Alila Hotel

**Note :** This brochure is purely a conceptual presentation and not a legal offering. The promoters reserve the right to make changes in elevation, specifications and plans as deemed fit.



# QUALITY & TRUST AS FOUNDATION

Vishnu Priya Group was established in 1990 in Hyderabad to build quality homes to discerning clientele. They integrate architectural excellence, greenery and lifestyle amenities in every project. With competent engineers and experienced workforce, Vishnu Priya delivered happiness to every customer. So far, 30 projects with over thousand apartments, commercial spaces and a gated community of villas were built in Hyderabad and Bengaluru. All their properties gave multifold appreciation in a short period of time.

The Vishnu Priya Group is also involved in construction since 1970. They undertook Infrastructure projects like roads, bridges, school buildings. With the same commitment they deliver "Parimala SunRidge".

## Our Projects



Parimala Trinity, Panathur, Outer Ring Road



Pearl Wood, AECS Layout



Laxmi Chambers  
AECS Layout



Parimala Harmony  
AECS Layout



Parimala Vintage  
AECS Layout



Parimala Residency  
AECS Layout



Parimala Orchid  
AECS Layout



Parimala Elan, Marathahalli  
Behind Kalamandir



Parimala Winsome  
AECS Layout

### PROMOTERS



## VISHNU PRIYA GROUP

#187, Ganesh Temple Road, AECS layout,  
Opp. Brook Fields, Kundalahalli, Bangalore - 37  
E-mail: [sunridge@vishnupriyagroup.com](mailto:sunridge@vishnupriyagroup.com)  
[www.vishnupriyagroup.com](http://www.vishnupriyagroup.com) / **sunridge**  
Call : 78295 55599, 99011 23124, 99000 65395

### SITE ADDRESS

Sy. No. 12/2b, 11/6,10 Varthur Main Road  
Siddhapura, Bangalore - 560066

### ARCHITECTS



**ASLAM ARCHITECTS &  
INTERIOR DESIGNERS PVT LTD**

#87, Nanda Deep Kumara Krupa Road, Kumara Park East, Bangalore - 560 001  
Ph: +91 080 2225 3532, 2225 9342

### STRUCTURAL CONSULTANTS



**ACME Consultants Inc.**

#8, 2nd'1' Main 60 feet Main Road, Boopsandra, New Extension  
Bangalore - 94. Phone: +91 80 2341 8378 / 2341 8379  
Email: [acmeconsultants.inc@gmail.com](mailto:acmeconsultants.inc@gmail.com) | [www.acmeconsultantsinc.com](http://www.acmeconsultantsinc.com)